

C6

CADOLI

卡多麗

Thermal healing & Anti-Fingerprint HPL

魔力面板

熱修復  
超霧面  
抗指紋



## 素色系列 SOLID SERIES



C6111 冰藍

4'x 8'x1mm  
4'x10'x1mm



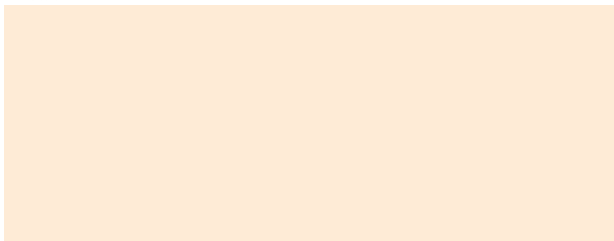
C6101 銀河白

4'x 8'x1mm  
4'x10'x1mm



C6105 海軍藍

4'x 8'x1mm  
4'x10'x1mm



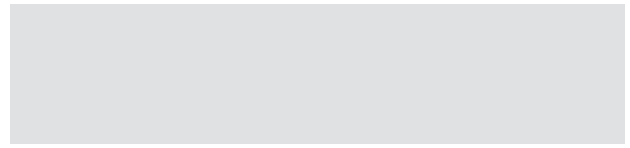
C6106 銀杏白

4'x 8'x1mm



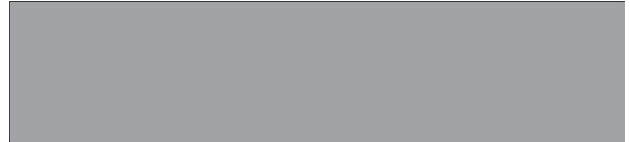
C6107 芥末黃

4'x 8'x1mm



C6102-A 珍珠灰

4'x 8'x1mm  
4'x10'x1mm



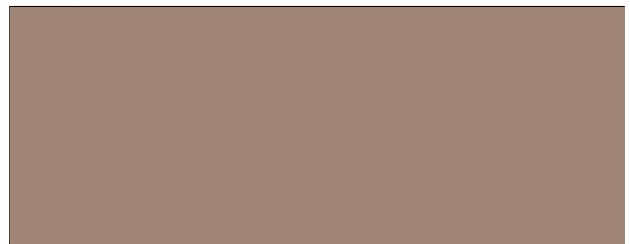
C6108 北極灰

4'x 8'x1mm



C6103 板岩灰

4'x 8'x1mm  
4'x10'x1mm



C6104 拿鐵棕

4'x 8'x1mm  
4'x10'x1mm



C6112 黑巧克力

4'x 8'x1mm



C6110 花香橙

4'x 8'x1mm



C6109 勃艮第酒紅

4'x 8'x1mm



## 木紋系列 WOOD SERIES




 **C6306 原切橡木** 4'x 8'x1mm  
4'x10'x1mm



 **C6301 橫切櫻花木** 4'x 8'x1mm  
4'x10'x1mm



 **C6302 橄欖木** 4'x 8'x1mm  
4'x10'x1mm



 **C6308 天然柚木** 4'x 8'x1mm



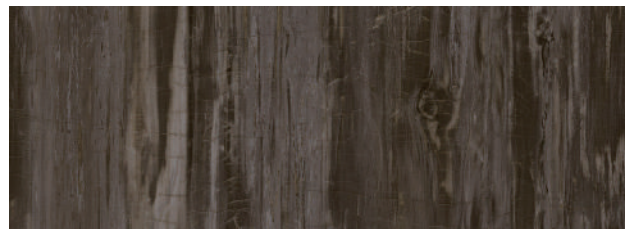
 **C6305 金絲柚木** 4'x 8'x1mm  
4'x10'x1mm




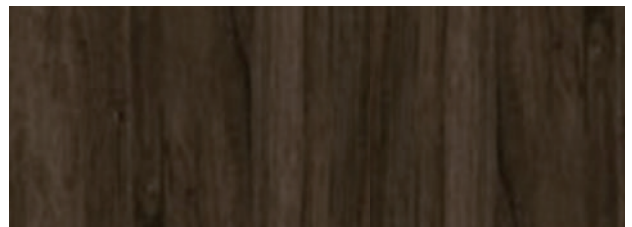
 **C6303 古巴硬木** 4'x 8'x1mm  
4'x10'x1mm



 **C6304 復古榆木** 4'x 8'x1mm  
4'x10'x1mm



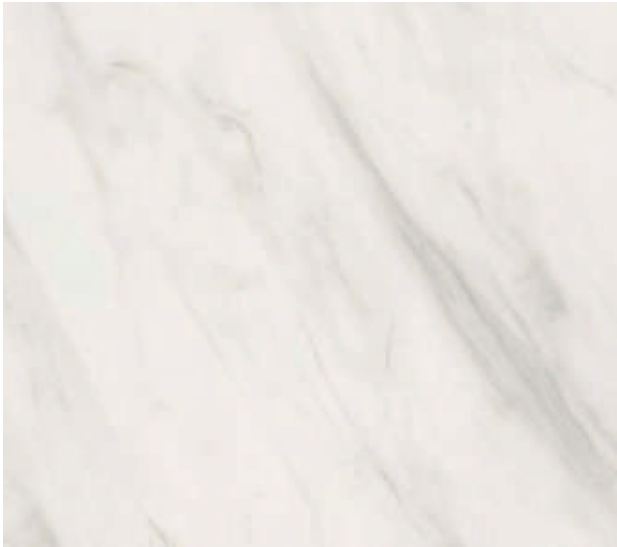
 **C6307 木化石** 4'x 8'x1mm



 **C6309 黑胡桃木** 4'x 8'x1mm



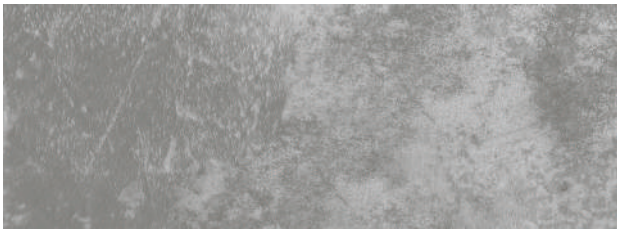
## 石紋系列 STONE SERIES



C6201 大理石

4'x 8'x1mm

4'x10'x1mm



C6203 火山灰岩

4'x 8'x1mm

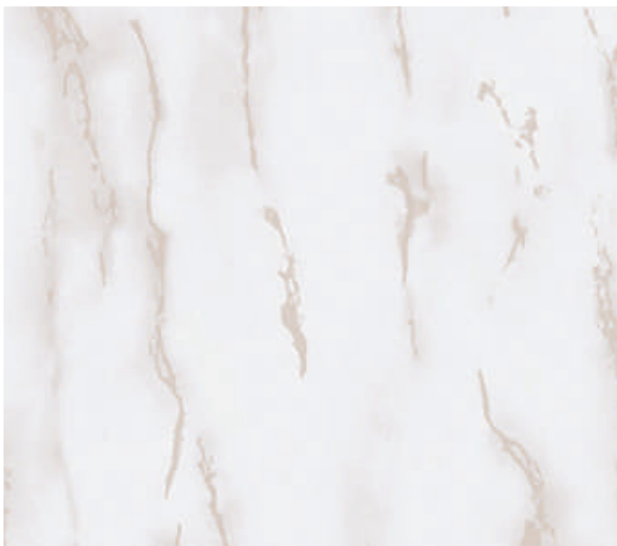
4'x10'x1mm



C6205 黃金熔岩

4'x 8'x1mm

4'x10'x1mm



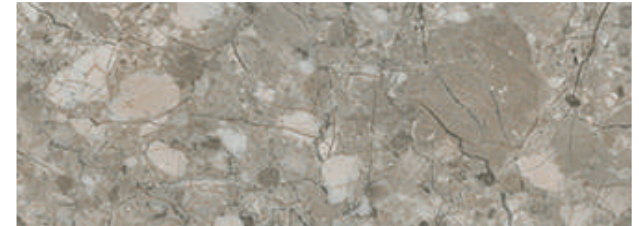
C6207 雅典娜大理石

4'x 8'x1mm



C6206 石灰岩

4'x 8'x1mm



C6209 花紋石

4'x 8'x1mm



C6202 雲海石

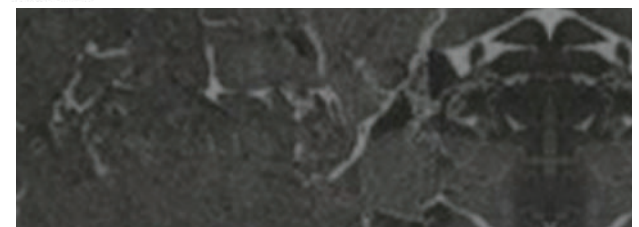
4'x 8'x1mm

4'x10'x1mm



C6208 銀河石

4'x 8'x1mm

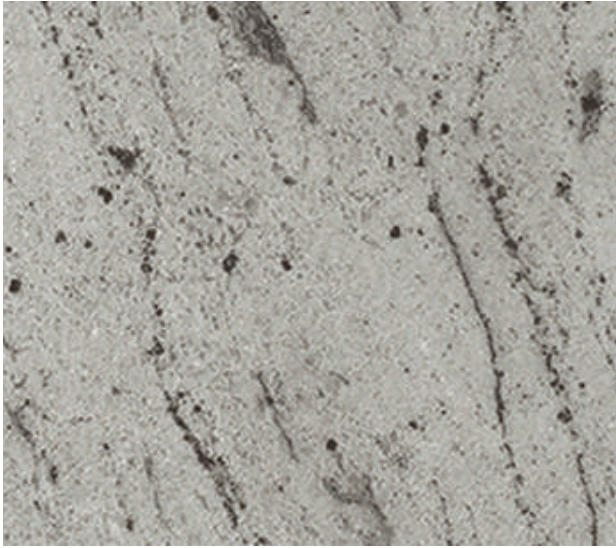


C6204 金剛黑石

4'x 8'x1mm

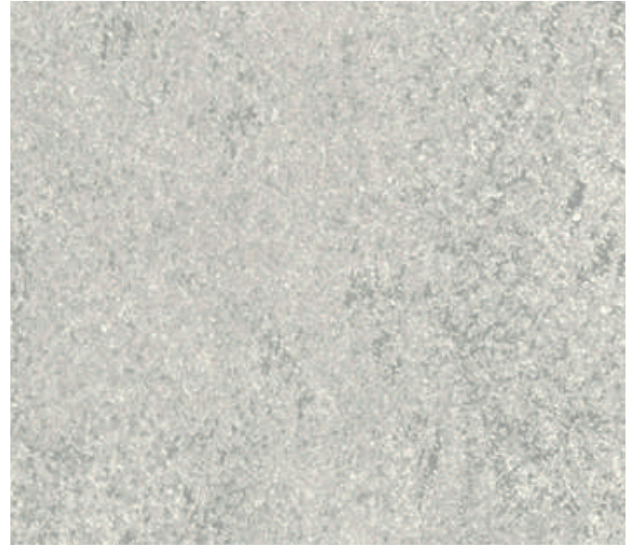
4'x10'x1mm

岩板系列 ROCCIA SERIES



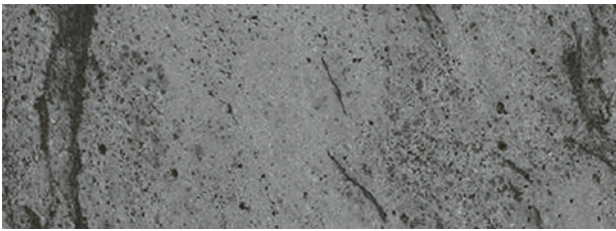
PC6401R 撒哈拉淺灰

4'x 8'x1mm



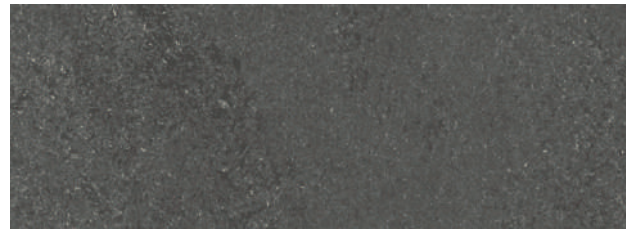
PC6403R 熔岩淺灰

4'x 8'x1mm



PC6402R 撒哈拉深灰

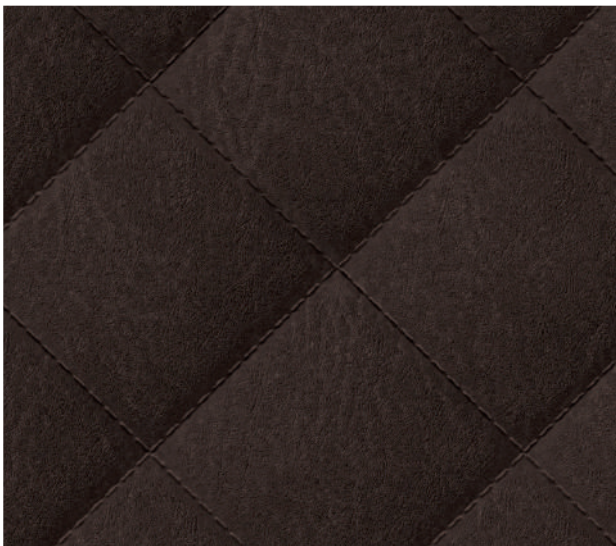
4'x 8'x1mm



PC6404R 熔岩深灰

4'x 8'x1mm

車線皮革系列 LEATHER SERIES



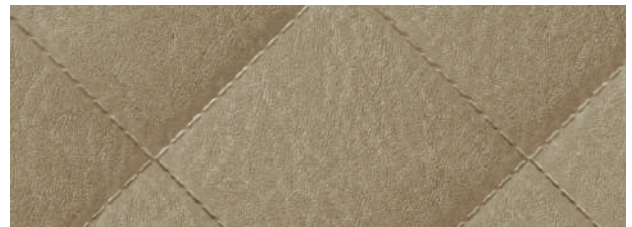
PC6504L 深咖皮紋

4'x 8'x1mm



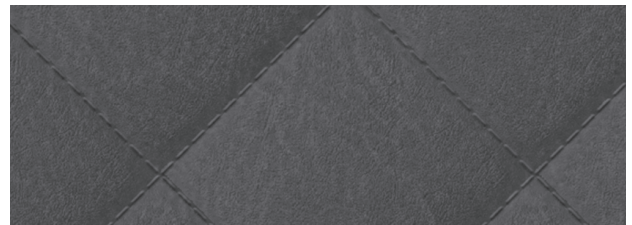
PC6501L 染白皮紋

4'x 8'x1mm



PC6503L 米黃皮紋

4'x 8'x1mm



PC6502L 深灰皮紋

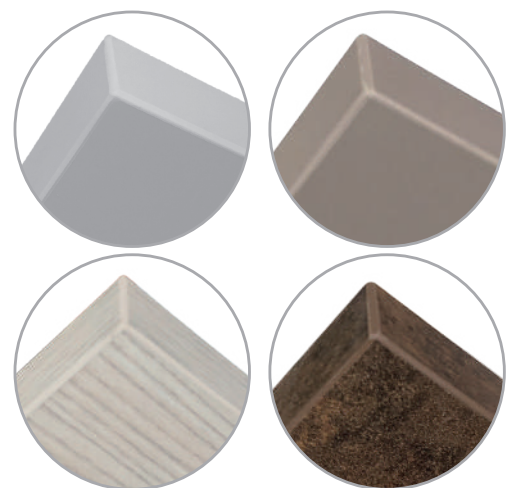
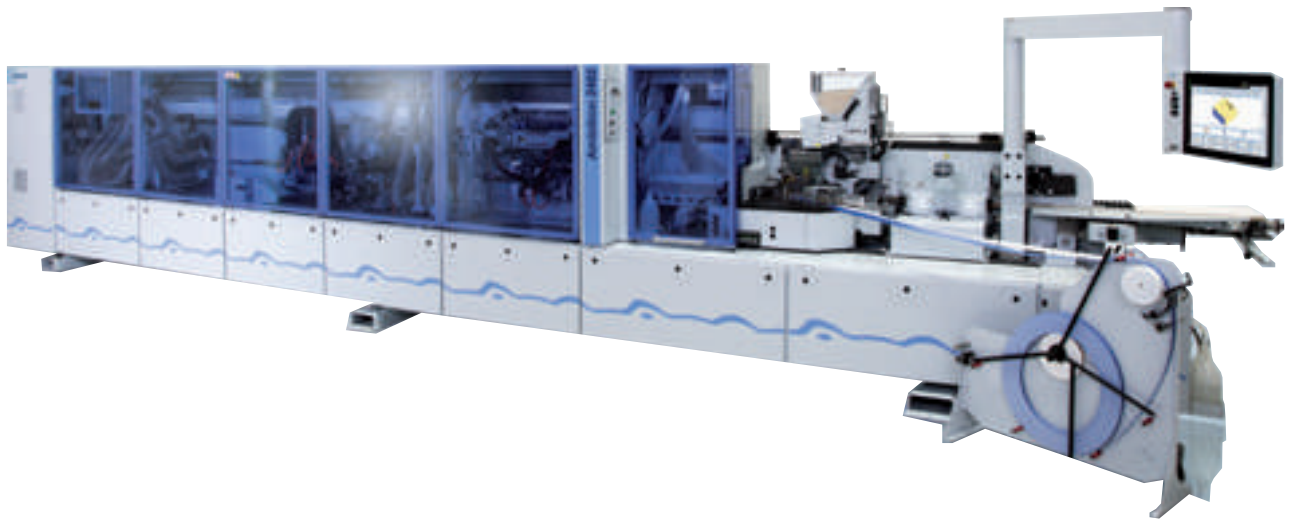
4'x 8'x1mm

# 魔力面板 / 滾石面板 / 皮革面板

採用德國  HOMAG 最新熱風封邊機

搭配同色特製邊條 幾乎無接縫貼合 一體成型 完美呈現

搭配德國  HOMAG 最新高科技熱風封邊機 追求產品的最高品質



(木心板)

無縫貼合 一體成型

# C6 CADOLI

卡多麗

Thermal healing & Anti-Fingerprint HPL

## 魔力面板

熱還原技術 超奈米霧面 抗指紋功能

1220 x 2440 x1mm / 1220x3050x1mm

採德國奈米技術研發製造的高壓美耐板  
具最新熱修復機能 細微刮痕可輕易修復 表面可常保如新  
無可比擬的終極霧面 滑順如同嬰兒嫩膚觸感 無光澤抗指紋拋霧處理  
多項的國際認證 可喻為最新一代的室內科技面材



### 檢測報告

Technical Data Sheet				
Sl. No.	Properties	Unit	Specified Value	Typical Stylam Value
			BS EN 438	
1	Thickness	mm	1 ±0.10	1 ±0.10
2	Resistance to immersion in boiling water			
	a) Mass increase	% , Max.	10	7.5
	b) Thickness increase	% , Max.	12	8.5
	c) Appearance	Grade, Min.	4	4
3	Resistance to surface wear	Rev. Min.	350	380
4	Resistance to dry heat at 180°C			
	a) Appearance:Gloss	Grade, Min.	3	4
	b) Appearance: Others	Grade, Min.	4	5
5	Dimensional stability at elevated temperature	(L)%, Max.	0.55	0.40
		(T)%, Max.	1.05	0.85
6	Resistance to impact by small diameter ball	N,Min.	20	30
7	Resistance to scratching	N,Min.	2	2.5
8	Resistance to staining:			
	a) Group 1&2	Grade, Min.	5	5
	b) Group3&4	Grade, Min.	4	5
9	Resistance to cigarette burns	Grade, Min.	3	4
10	Resistance to cracking	Grade, Min.	4	5
11	Resistance to steam	Grade, Min.	4	5
12	Resistance to colour change in			
	a) Xenon arc light	Grade, Min.	6	6
	b) Enclosed Carbon Arc Light	Grade, Min.	5	5



C6

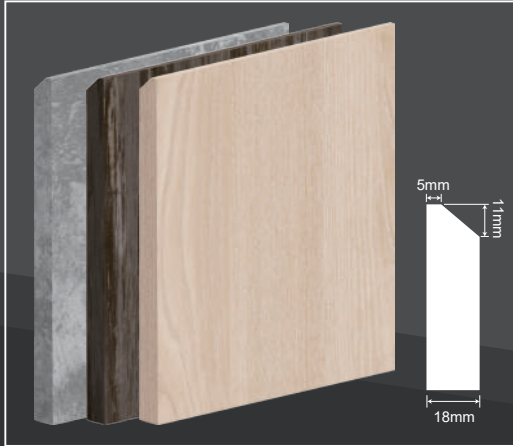
**CADOLI**  
卡多麗

Thermal healing & Anti-Fingerprint HPL

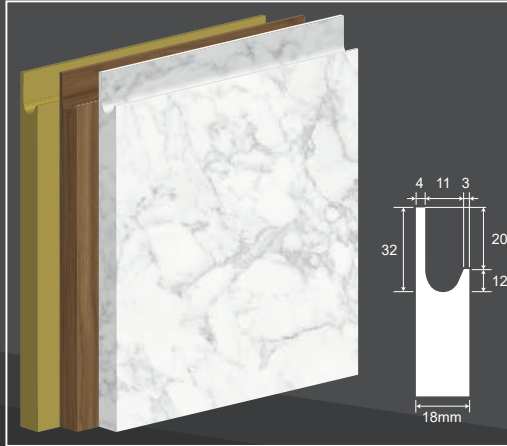
採用德國HOMAG最新熱風封邊機 搭配同色特製邊條 幾乎無接縫貼合 一體成型 完美呈現



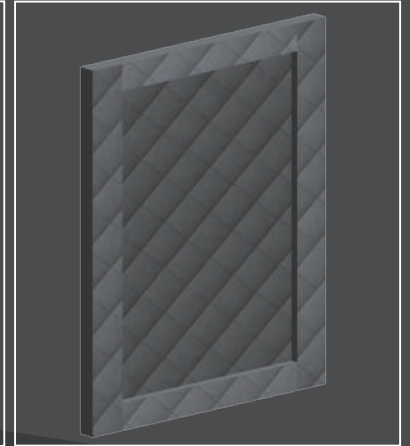
斜背門板



J型門板 限色

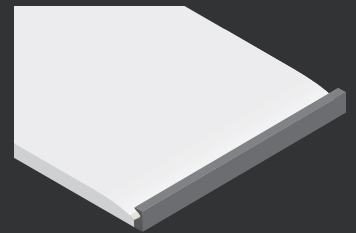
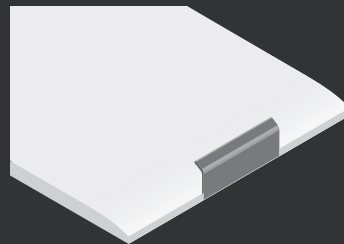
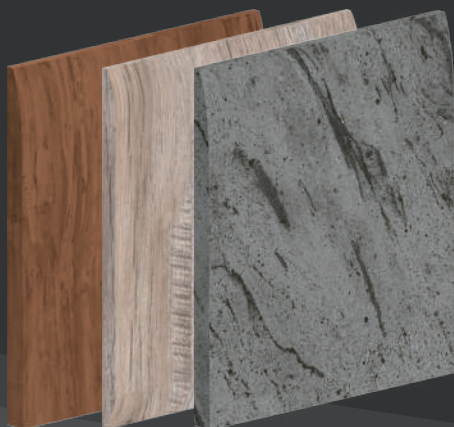


里昂型門板



海灣門板 單彎&雙彎

流線弧型 專利認證 無縫封邊 完美造型

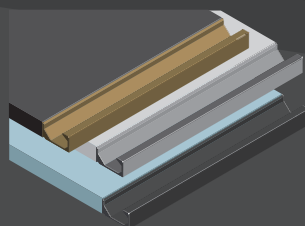


WP-077 舒適型

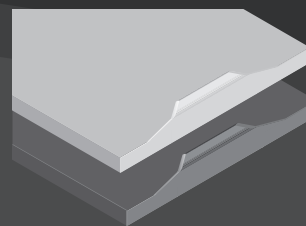
鈦晶色 WP-072 小騎士型

鈦晶色

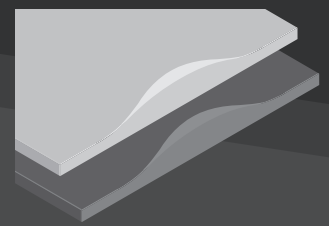
四E門板



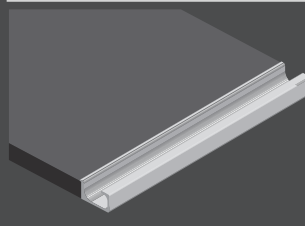
WP-051 隨意型 拉絲金 鈦灰色 黑色



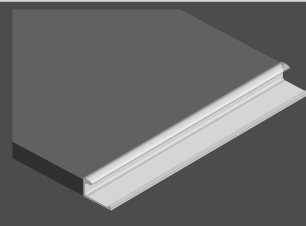
WP-074 京都型 鋁色 鈦晶色



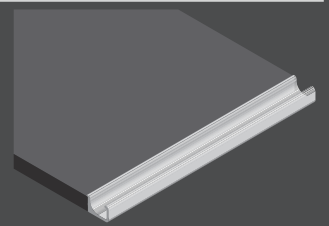
WP-073 和風型 鋁色 鈦晶色



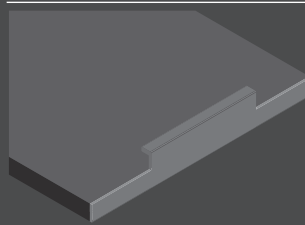
WP-050 豪華型 鋁色



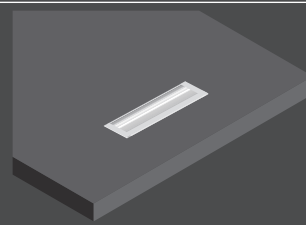
WP-055 夏都型 鋁色



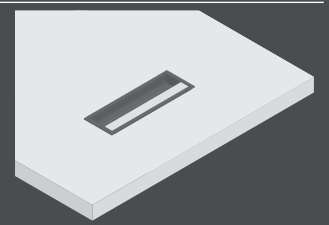
WP-028 典雅型 鋁色



WP-078 小騎士型 鈦晶色



WP-081 經典型 鋁色



WP-086 高雅型 黑色

黑色